

Installation & Maintenance Guide

Wood Polymer (Plastic) Composite (WPC)

PLEASE READ COMPLETELY BEFORE INSTALLATION

Warranty Information: Refer to Lions Floor Warranty Guidelines.

Thoroughly examine the flooring prior to installation for grade, color, finish and quality. Ensure adequate lighting for proper inspection. If the flooring is not acceptable, do not install the floor. Please contact the seller immediately and arrange for a replacement. Please note our products contain a standard color and pattern variation and installers should be working from multiple open boxes to ensure boards are blended throughout. The manufacturer cannot accept responsibility for installation of flooring with visible defects. The installation of this product warrants the acceptance by the installer or owner of the quality of the material, as well as on the jobsite conditions in which the material is being installed.

Prior to installation of any flooring, the installer must ensure that the jobsite and subfloor meet the requirements of these installation instructions. All necessary accessories, including trim, must be present at the jobsite prior to beginning installation. The manufacturer is not responsible for flooring failure resulting from unsatisfactory jobsite and/or subfloor conditions.

When purchasing flooring, we recommend adding 5%-15% to actual square footage needed for cutting allowance and to compensate for culled material.

It shall be the responsibility of the Installer to document installation date, product SKU and Lot information, subfloor moisture content, site relative humidity and site temperature. This information must be documented by the installer and a copy provided to the property owner to ensure product warranty coverage.

Failure to follow all of Lions Floor recommended installation guidelines will void warranty coverage.

Jobsite & Pre-Installation Guidelines:

WPC flooring should be one of the last items installed for any new construction or remodel project. All Lions Floor products must be installed per the manufacturer's guidelines. For any questions or specifications not specifically outlined herein, please contact Lions Floor Technical department.

- If, prior to installation, this flooring is not acclimated to room temperature (between 65°F ~ 85°F) at job site between 24 ~ 48 hours and, if post-installation, such flooring is not continuously maintained at such temperature, will void the warranty.
- All "wet" work such as paint, drywall, concrete, masonry, plumbing must be complete and dry prior to the delivery of WPC flooring. Gutters and downspouts should be in place and the exterior grade complete to allow for proper drainage of water away from the building's exterior perimeter.
- HVAC should be on, operational and maintained between 65 – 85 degrees with a relative humidity of 35%- 55% range a minimum of 5 days prior to delivery, during and after installation of the flooring.
- If HVAC is not possible at time of installation the environmental conditions must be at or near normal living conditions between 65 – 85 degrees and at the average yearly relative humidity for the area.
- We recommend using a Hydrometer to monitor interior climate and the use of a humidifier/dehumidifier may be required.



- Test wood sub floors for moisture content using moisture meter recommended for wood flooring. Take several readings of the subfloor and average the results. The subfloor is ready when moisture readings are of 14% or less. If readings are higher let subfloor remain open with HVAC on until readings come down to acceptable range.
- Concrete Moisture testing must follow ASTM F-2170 using a meter and probe method following meter manufacturer’s instructions. We do not recommend ASTM F-1869 Calcium Chloride Testing due to inconsistencies in testing.
- Test the concrete subfloors moisture content by using an appropriate moisture meter. The moisture content for concrete subfloors must not exceed 85% Relative Humidity per ASTM F-2170. DO NOT install the flooring. Before moisture testing begins, the slab must be cured for a minimum of 60 days or less if readings are acceptable. When using a moisture meter, please refer to the recommended guidelines set forth for by the moisture meters’ manufacturer.
- Basements and crawl spaces must be dry. Use of a 6-mil black polyethylene is required to cover 100% of the crawl space earth. Crawl space clearance from ground to underside of joist to be no less than 18” and perimeter vent spacing should be equal to 1.5% of the total square footage of the crawl space area to provide cross ventilation in accordance with local regulations.
- It is required to use a moisture barrier when installing over a on grade and below grade concrete slab. A 6-mil polyethylene must be used under entire flooring install area. Overlap polyethylene seams 6” and use waterproof tape on seams. Remember to roll the 6-mil polyethylene out perpendicular to the direction you are installing your floor.

ALWAYS CHECK MOISTURE LEVELS BEFORE INSTALLING

Preparing and leveling the sub-floor:

1. The subfloor needs to be structurally sound.
2. The sub-floor should be free of any surface defect. If it is not, fill gaps with a Portland cement based leveling patch, sand/grind down any high areas and fill low areas.
3. The sub-floor must be level and flat to 3/16” (5mm) per 10’ radius or 1/8” (3.2mm) per 6-foot radius.
4. Any gaps in the sub-floor should not exceed 3/16” (5mm).
5. Use flooring screws into floor joists if necessary to minimize squeaks in subfloor.
6. The surface must be clean and free of any contaminants such as wax, paint, grease, dust, oil, nails, staples, old adhesive, etc. and thoroughly swept and free of all debris.
7. For light weight concrete installation, ensure that the concrete is not low-density (below 3000 psi).
8. The plywood subfloor for floating flooring installation must be Exposure 1 plywood minimum 19/32” thick or Exposure1 must be minimum 23/32”, both must be 4’x8’ panels tongue and groove. The subfloor must not have more than 1/16” deflection movement.

Acceptable Installation Methods	
Above Grade	Float
On Grade	Float
Below Grade	Float



Existing Floors:

Installation over existing flooring requires the installer to consider potential issues related to moisture damage, adhesive failure and fastener failure.

Acceptable floor coverings include:

Solid wood, linoleum (1 layer only), terrazzo, vct, ceramic, and stone tile. Tiled floors with grout lines will require a cementitious leveling compound to fill any grout lines, voids, or cracks. Unacceptable floor coverings include Carpet (any type), foam underlayment, cushioned-back vinyl, rubber, cork, laminates, free-floating floors, and wooden floors over concrete.

Recommended Installation Area:

This product is not suitable for any outside use, sunrooms/solariums, showers, saunas, seasonal porches, camping trailers, boats, RV's or rooms that have a potential of flooding. Do not install in rooms or homes that are not temperature controlled.

Exposure to long term direct sunlight can cause damage to your floor. Failure to properly shade or UV tint windows can discolor, fade, or buckle vinyl planks. Use window treatments or UV tinting on windows. WPC is not intended for use on vertical wall surfaces.

Do not glue, nail, screw or fasten to substrate. Permanent fixtures, vanities, tubs, and showers, cabinetry, kitchen islands, or other fixed objects must not be installed on top of floating flooring systems. Flooring must be installed after cabinetry and fixed objects, or appropriate expansion breaks and/or proper expansion must be incorporated.

Inspect the Flooring:

Inspect material for color, finish, milling, texture and grade. Set aside pieces that may not be acceptable once installed. A maximum of four boxes may be opened for inspection prior to installation. The floors have been thoroughly inspected during the manufacturing process, but it is the responsibility of the installer/homeowner to do final inspection and cull-out boards that are not acceptable before installation.

Blending of Cartons

To achieve a uniform appearance across the entire floor, we require that you open and work from a minimum of four cartons at a time and lay out the flooring ahead of time. Be sure to mix the planks for the best aesthetic appearance. Make certain the room is well lit to ensure color is consistent and that any visual defects can be seen and removed prior to installation. "Racking the Floor" is essential to achieve a random appearance. Start by cutting several boards in random lengths, differing the lengths by at least six inches. As you continue working across the floor remember to maintain a six-inch minimum space between the end joints. Randomly install different lengths to avoid a patterned appearance. Never waste materials; the end cuts from starter rows should be used at the opposite side of the room to complete rows or may be used to start the next row.

Expansion Space and Continuous Run Requirements

Expansion Space

WPC flooring is installed as a floating floor system and requires expansion space to accommodate normal movement caused by changes in temperature and humidity.

Maintain a minimum **1/4" (6 mm) expansion gap** around the entire perimeter of the installation, including walls, door frames, pipes, cabinetry, and all fixed vertical surfaces.



Undercutting Door Casings

All door casings must be undercut **1/16" higher than the thickness of the flooring being installed**. Use a scrap piece of flooring as a guide. Place the plank on the subfloor and cut the casing using a handsaw or power jamb saw set at the appropriate height. When flooring is installed beneath the casing, ensure the **required 1/4" expansion gap is maintained**. Failure to properly undercut door casings or maintain required expansion space **may result in voiding the product warranty**.

A **T-molding is not required when flooring continues through a doorway**, provided the total continuous run does not exceed the maximum installation distance.

Continuous Run Limitations

Floating installations **must not exceed 70 feet (21 m) in any single direction** without the use of a transition molding. Installations exceeding this distance must incorporate a **T-molding or expansion break** to relieve stress within the floating floor system and allow for proper expansion and contraction.

Coordinating Transition Moldings

All required transition moldings should be available on site prior to installation. Ensure moldings are coordinated with flooring planks of similar color and grain. Lions Floor cannot be held responsible for color variations between flooring products and coordinating trim accessories.

Floor Protection During Construction:

Always protect the surface of the installed flooring during construction. Cover the floor with quality rosin paper or other paper that will allow the floor to breathe and secure it to the baseboards; never tape directly to flooring. Do not use plastic or polyethylene sheeting to cover the floor. The flooring must be cleaned and completely free of any debris to minimize damage.

If you have any questions regarding the installation of flooring not addressed in our guidelines, please contact our technical department.

Radiant Heated Subfloors: Must be warranted by manufacturer for installation of resilient flooring and never exceed 85 degrees.

The following guidelines must be followed to maintain warranty coverage. Failure to follow ALL guidelines will result in termination of warranty coverage.

- Concrete must be allowed to properly cure and dry a minimum of 6 weeks prior to operation of radiant heat system.
- Over concrete, moisture vapor emission rate for concrete subfloors must not exceed 85% RH using ASTM 2170k and documented for warranty coverage.
- Wood subfloors must not exceed 14% moisture content.
- The subfloor must be flat to 3/16" over a 10' radius or 1/8" over a 6' radius.
- T-moldings must be used to separate heating zones.
- The operation of radiant heat system should be set to run at 2/3 of the maximum output for a minimum of 2 weeks prior to installation of flooring to further allow moisture from concrete to dissipate and reach a final moisture content. This must be done in both heating AND non-heating seasons.
- The use of a separate thermostat for each individual zone is required. An outdoor temperature sensor is highly recommended to adjust temperature according to anticipated heat loss.
- Reduce heat to a temperature of 65° 4 days prior to installation.
- After 48 hours post-installation, we recommend slowly raise temperature of the heating system to its preferred operating level. Please exercise caution and expect to achieve peak after a period of 5 days.

- Do not allow the surface temperature to exceed 85°F with no more than a 5°F variance in surface temperature over a 24-hour period.
- Seasonal expansion and contraction are expected and does not mean a defect is present within the product.

GENERAL INSTALLATION TOOLS

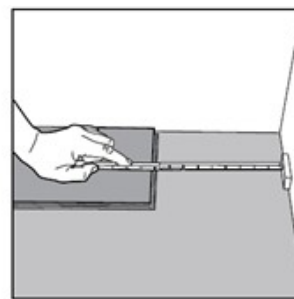
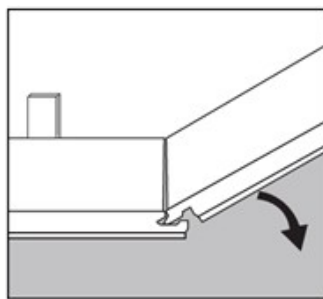
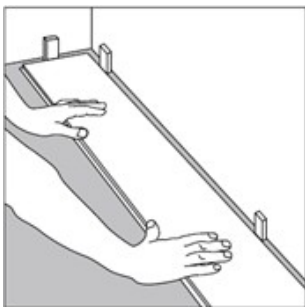
- Moisture Meter
- Tape Measure
- Pencil
- Chalk Line
- Hand Saw or Power Saw
- Utility Knife
- Tapping block
- Crowbar or Pry Bar
- Wood or Plastic Spacers (1/4")
- Rubber Mallet

Floating Installation Instructions:

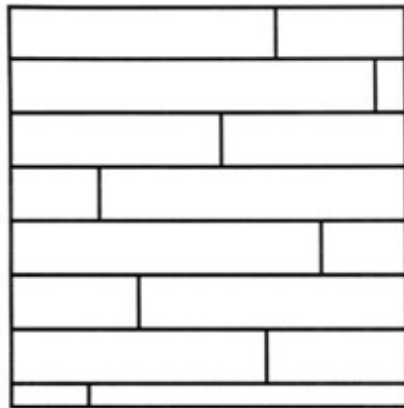
Step One - Establish a Starting Point

1. Remove any existing wall base, shoe molding, quarter round or doorway threshold.
2. If installation is above or at grade, poly-film is recommended but not necessary.
3. Determine the longest, straightest wall to begin installation; this is usually an exterior wall.
4. Measure the total width of the flooring (including the tongue), plus 1/4" for expansion. Measure out this distance in at least 2 places from the starting wall and 12" from the corners. Then, snap a chalk line parallel to the starting wall.

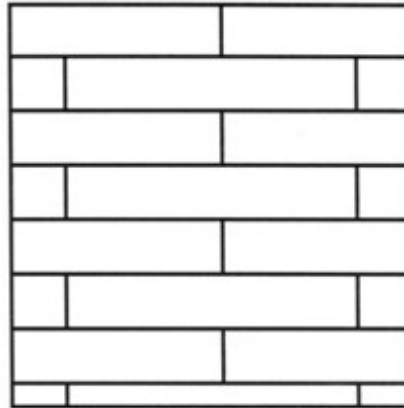
Step Two - Lay Out



1. Start with a full plank and align the planks tongue with the working line, cut the last plank to the proper length leaving a 1/4" from the end wall. Repeat this step for the second row, making sure to stagger the joints. The minimum end stagger is 6 inches.



Stagger End Joints

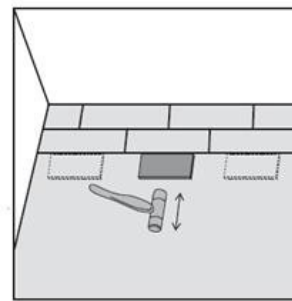
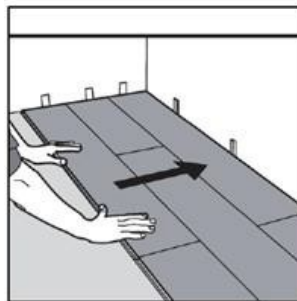
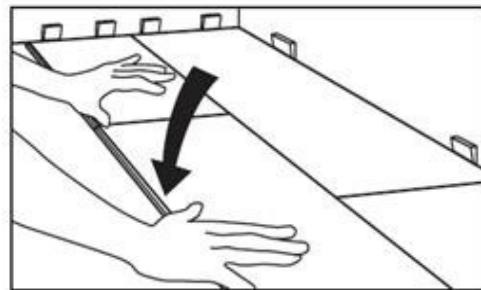
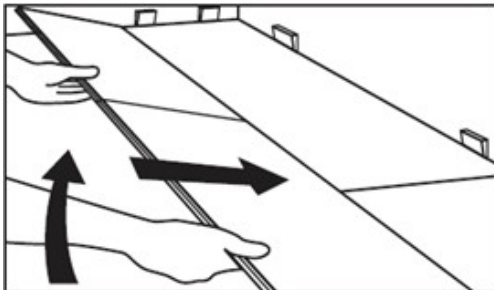


Avoid "H" Joints

Step Three – Rack the Floor

1. Once the first row is in place, continue to lay out the planks. Be sure to blend the planks and stagger the end joints a minimum of 6" apart to ensure a favorable appearance.

Step Four – Installation of Flooring



1. Once enough of the planks have been racked out, begin installing the planks by fitting the short side of the click system into the long side of the click system. Make sure that the click system is engaged evenly; any gapping can compromise the integrity of the installation. If gapping occurs use a tapping block and rubber mallet on the long seams and gently tap down the roll to close gaps. Continue installing planks across the room ending at the far wall.
2. It may be necessary to rip the last row to allow for the minimum $\frac{1}{4}$ " expansion. If the last row is 2" or less click the pieces to the last full uninstalled row and install them together. If needed use a light rubber mallet to make the remaining rows tight to the installed planks.

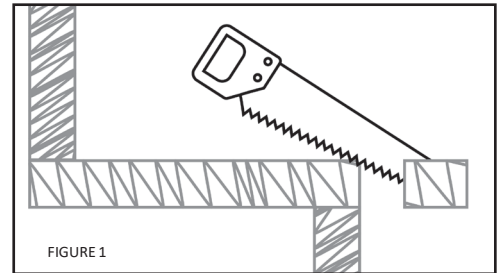
Step Five - Completing the Job

1. Clean the floor with any high-quality, p/h-neutral vinyl cleaner.
2. Install transition pieces -i.e. – stair nose, reducer, end cap, t-molding and base shoe. Please follow the manufacturer's installation guidelines for transitions.
3. Any unused material should be stored in a dry place in case future repairs are needed. We recommend saving at least 2 boxes.

SPECIAL INSTRUCTIONS FOR INSTALLATION ON STAIRS

Preparation

Remove existing floor covering if necessary and thoroughly clean the surface of all treads and risers. Remove all residue of old glue and underlay, sand the surfaces clean and vacuum to remove all dust and debris. Make sure the existing stair treads are free from noise when walked on. Add additional fasteners if necessary. If necessary, cut back the overhang of the existing tread flush to the riser (Figure 1).



Check Run and Rise

Ensure stair treads conform with local building codes in your area for appropriate tread depth and step height. Most building codes require a rise or run difference of no more than 3/8" (10mm) throughout the entire stair system.

Adding An Underlayment (If Required)

If there is more than a 3/8" (10mm) variance on some stairs in the run, it may be worthwhile adding a wood underlayment to some treads to minimize the height difference. To add an underlayment, use a plywood type material cut to the size of the tread and affixed with urethane construction adhesive.

INSTALLATION

IMPORTANT: REMOVE ATTACHED PAD BEFORE INSTALLING ON STAIRS. SCRAPE OFF PAD AND CLEAN THE SURFACE TO REMOVE ALL UNDERLAY RESIDUE FROM THE BACK OF THE BOARD.

All flooring material should be cut and dry fit prior to applying adhesive. If a flush mount nosing is being used start by dry fitting the flush mount nosing at the front of the step. Make sure if there is a riser the riser piece is in place so the nosing will fit correctly. When the nosing is in place use a pencil to mark a line on the back side of the molding onto the top of the step. This line will show you where to start the plank on the step. Using the line measure to determine the size to cut the plank to fit the step. Make sure the groove side of the plank is facing the front of the step. Start by installing the riser and the step by using a premium urethane construction adhesive. Apply adhesive in a S pattern on back of the riser piece and press on to the riser. Next using your marked line on top of the step leaving dry where the flush nose will be attached apply the adhesive in a S pattern onto the top of the step and press the per cut flooring onto the top of the step. Press down firmly so the adhesive transfers to the back of material for a permanent bond. Apply a thick bead of a premium urethane construction adhesive to the bottom of the nosing to adhere to the front of the step. Install nosing at a slight angle locking into the plank on the step pressing firmly into the adhesive. Use painters' tape to hold planks and nosing in place for **24 hours until adhesive has set. Do not allow traffic on stairs for 24 hours.**



Optional Glue Down Method:

If a full spread glue down is desired, use an approved PSA adhesive for vinyl planks. Follow the manufacturer's instructions for the adhesive application.

Apply a sufficient amount of adhesive using the recommended trowel at the starting wall in an area that can be covered within the working time the adhesive will allow.

Begin installing planks into adhesive when the opening time of adhesive is achieved. Start installing row by row using the same installation instructions above. Make sure and stagger the end joints at least 6.”

After planks are installed immediately roll the floor with a 100-pound roller both directions. Use a hand roller to roll under toe kicks and areas where the 100-pound roller cannot reach.

The planks may be walked on immediately; however, the floor should not be exposed to heavy rolling load traffic for 72 hours after installation. Use a piece of hard board or underlayment panels to protect your floor when moving heavy furniture and appliances back into the room.

Protect Your Floor

- Protect your floor with floor protectors that are made of non-staining felt under the legs of furniture to help prevent scuffing and scratching; Larger pads may be required on bigger objects. Scratching due to insufficient protection are not covered under by the warranty.
- Avoid walking on your vinyl floors with cleats, sports shoes and high heels. A 125-pound woman walking in high heels has an impact of 2,000 pounds per square inch. An exposed heel nail can exert up to 8,000 pounds per square inch. This kind of impact can dent any floor surface.
- When moving heavy furniture, do not slide it on the flooring. It is best to pick up the furniture completely to protect the floor from damage.

Floor Repairs:

- Very light and small surface scratches can be repaired with a staining “touch up” pen of the appropriate color or by using an almond stick. Please refer to manufacturer's recommendations on proper application.
- Slightly deeper scratches can be repaired by means of colored putty, acrylic and/or stains. Fill the scratches with the putty, level with putty knife and use terry cloth towel to wipe off excess.
- Very deep scratches or gouges may require the replacement of planks.

Plank Replacement

1. When replacing a plank make sure the plank that will be used for the replacement is in the room to acclimate for 48 hours to room temperature before the plank replacement.
2. When choosing a replacement plank use a plank that is not an identical plank to any of the planks that it will be touching. Choosing a plank that has different characteristics than the ones surrounding it will give the best results.
3. Locate the damaged plank to be replaced. Using a straight edge mark a line down the center of the plank. Next draw a 45-degree angle from the corners to the center line to form a triangle at each end of the plank.
4. Using an extra plank as a gauge to set your saw depth so you won't cut through the subfloor. Carefully cut through the center line of the plank and sweep or vacuum up the dust and debris. Next cut the diagonals carefully not to cut into and damage the adjoining planks and clean up any debris.
5. Remove the two center sections and carefully remove the triangles from each end.

6. Prepare the new plank by cutting off the top tongues and slightly undercutting with a utility knife.
7. Remove the small locking nub from the top of the end and side groove of the plank.
8. Cut off the bottom right corner grooves at a 45-degree angle.
9. Apply adhesive to the installed planks on the exposed locking grooves.
10. Apply adhesive to the groove sides of the new plank.
11. Slide the right side at an angle under the adjacent plank while sliding the bottom at the same time.
12. Once the right side is in rotate the plank in place and firmly seat the bottom of the plank.
13. Tap the left side gently with a mallet and clean up any adhesive.

Care & Maintenance:

For a comprehensive guide, please visit: <https://www.lionsfloor.com/care-cleaning/>

With today's advances in vinyl flooring stains and finishes, cleaning vinyl has never been easier. There are other steps you can take to minimize maintenance and maintain the beauty of your vinyl floors. Regular maintenance requires little more than sweeping with a soft bristle broom if your floor includes a beveled edge that could collect debris.

- Clean your floors periodically with a professional vinyl floor cleanser. Lions Floor recommends a P/H Neutral vinyl cleanser.
- For moderately soiled areas, use a mild solution of isopropyl (rubbing) alcohol and distilled water. Dilute the mixture by mixing one-part alcohol and 2 parts distilled water. For tougher spots, use a higher concentration of isopropyl alcohol and distilled water.
- Avoid using any cleaning agents containing wax, oil or polish. Left over residue will form a dull film.
- Always spot test in an inconspicuous area.
- Do not use any wood care floor cleaning products on vinyl floors. Self-polishing acrylic waxes can cause the surface to become slippery and appear dull quickly.
- Do not use vinegar as a cleaning solution, its acidic properties will harm the finish.
- Use area rugs both inside and outside doorways to help prevent grit, dirt and other debris from being tracked onto your floor. Please use a breathable rug pad underneath all throw rugs to prevent scratching.
- Place an area rug in front of the kitchen sink.
- Do not wet-mop the floor. Standing water can dull the finish, damage the floor and leave a discoloring residue.
- Do not use a steam mop of any kind. Damages associated with steam mop use will void warranty coverage.
- Wipe up spills immediately.

Protect your floor with floor protectors that are made of non-staining felt under the legs of furniture to help prevent scuffing and scratching; Larger pads may be required on bigger objects.